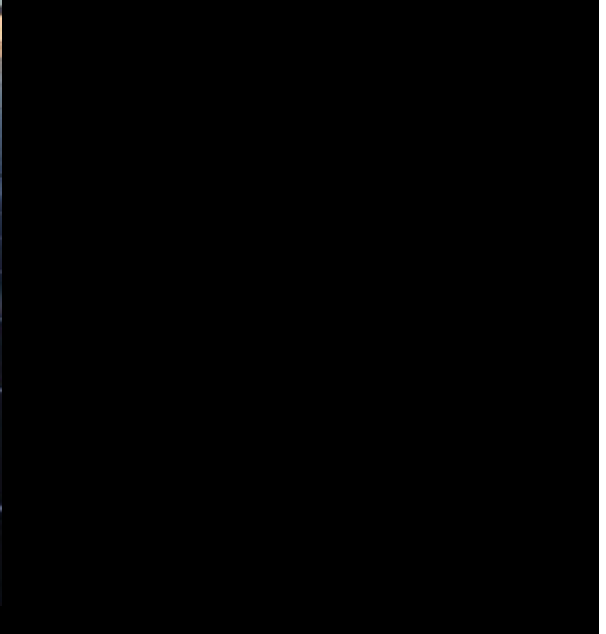




blue  planet
FOUNDATION





- 1. Is state support for energy and food security a priority?**
- 2. How do we fund it?**



Act 73 2010
***Tap the source of
our problem—
imported oil—to
fund our clean
energy future***



\$1

General Fund

\$14 million

Agricultural initiatives

\$3.5 million

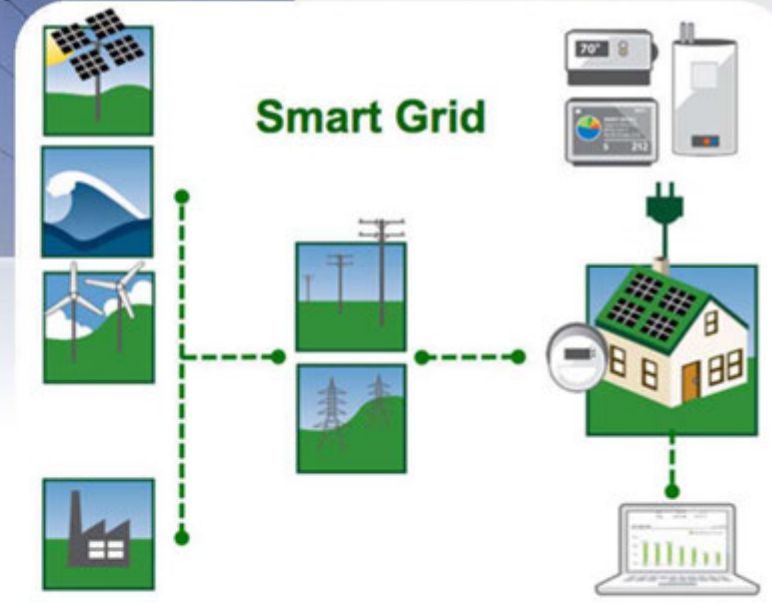
Energy initiatives

\$5.6 million



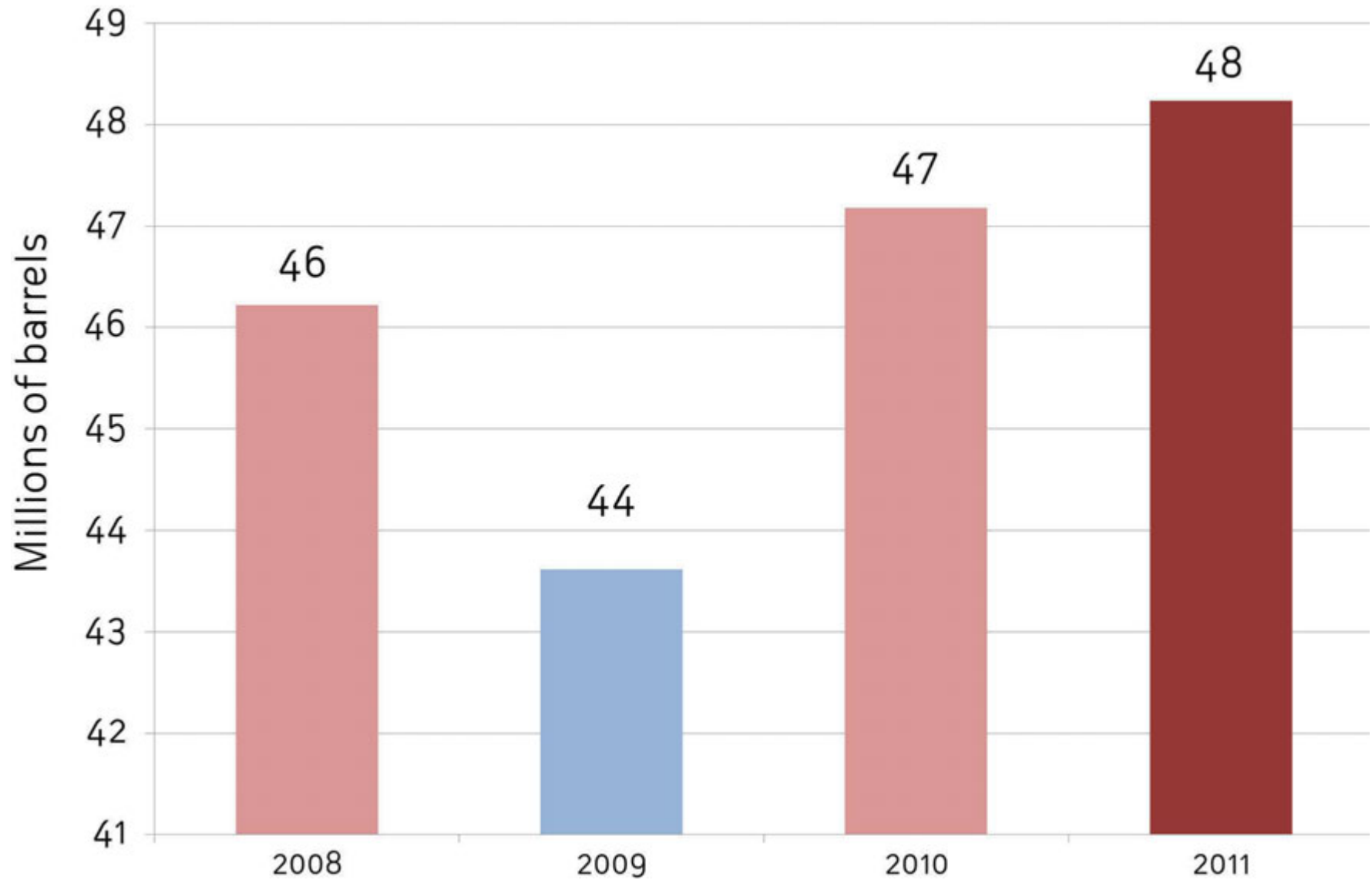
Agricultural initiatives
~\$10 million

Energy initiatives
~\$12 million

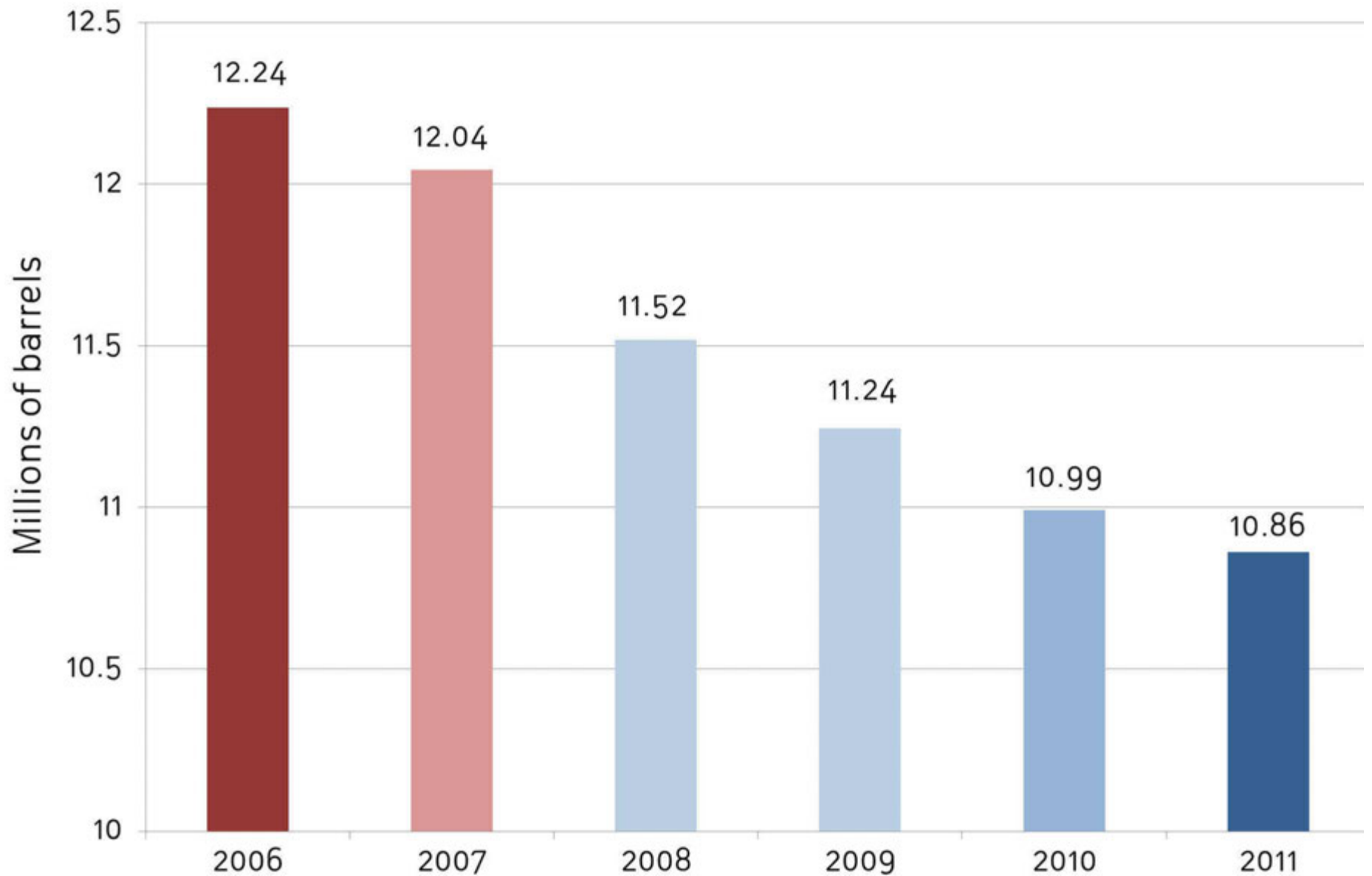




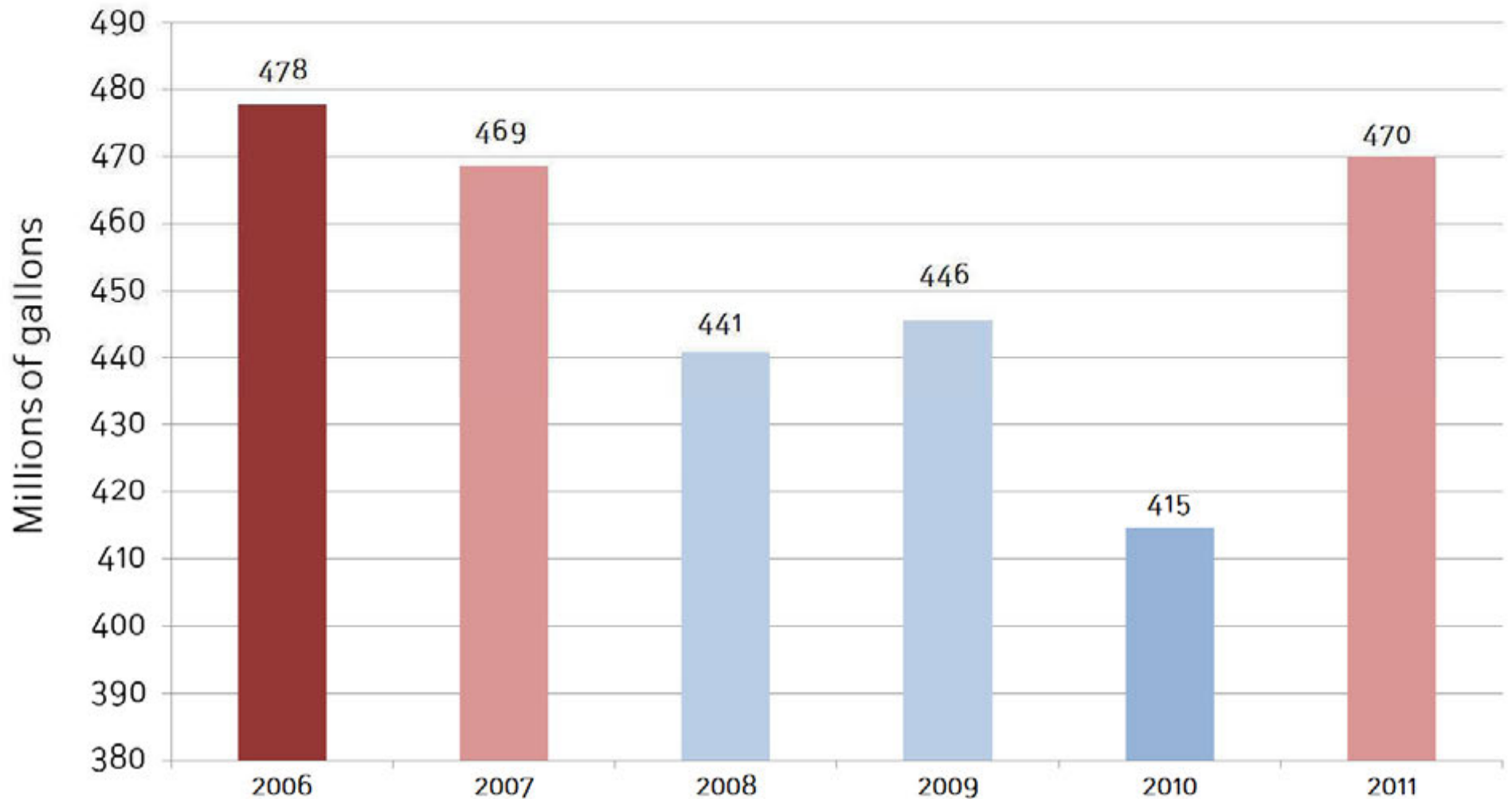
Barrels of oil imported annually



Annual oil consumption for electricity generation



Total annual gasoline consumption statewide

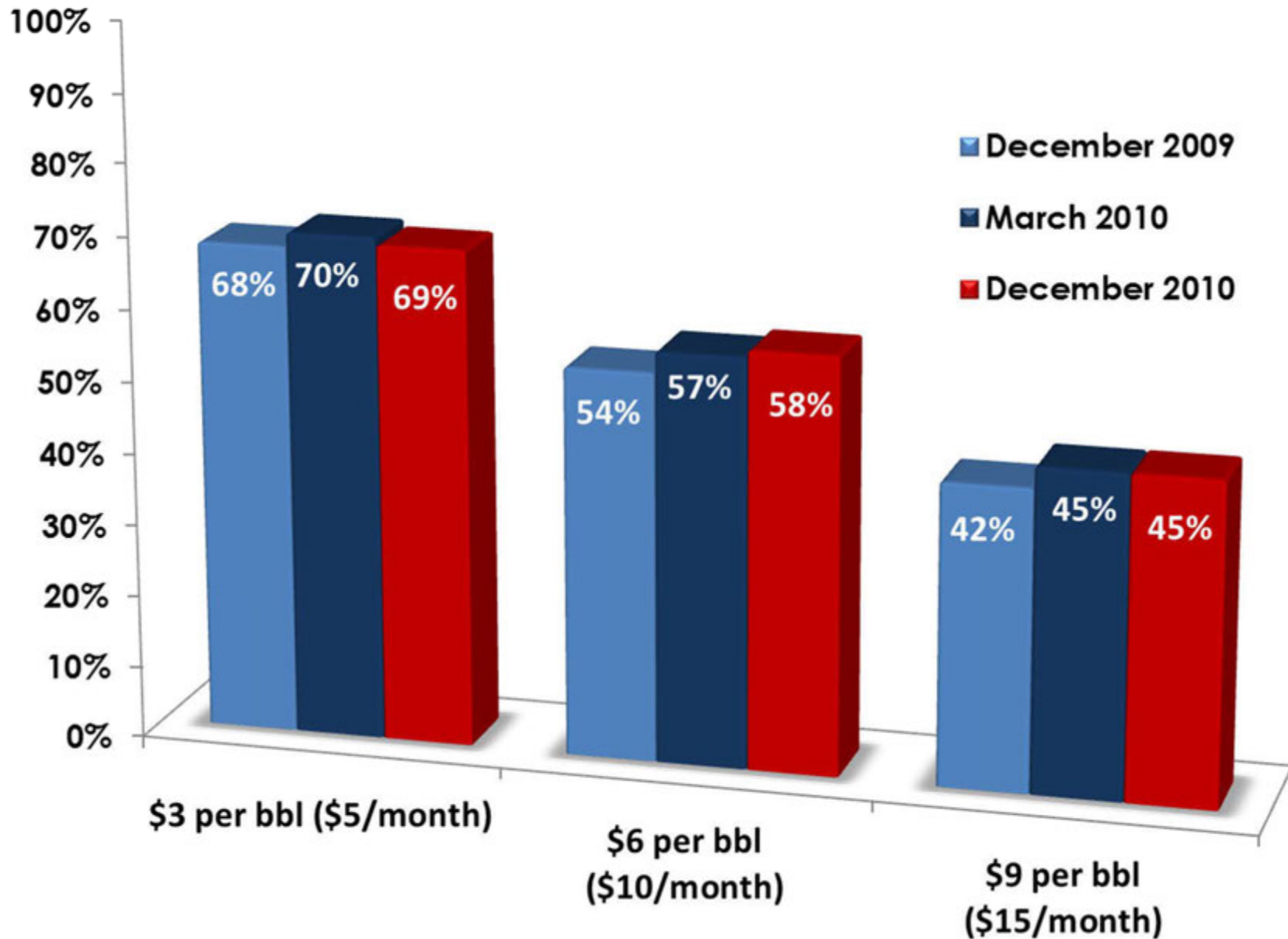




**I absolutely believe a price
on carbon is essential.**

*Steven Chu
U.S. Energy Secretary
Nobel Prize-winning physicist*

Resident Support for Barrel Tax





Agricultural initiatives
~\$10 million

Energy initiatives
~\$12 million





henk@blueplanetfoundation.org

808-954-6142

blueplanetfoundation.org



Blue Planet Foundation



BluePlanetFound